




Ridgecrest
REGIONAL HOSPITAL

2022 COMMUNITY BENEFIT REPORT

TABLE OF CONTENTS

2	LETTER FROM THE CEO
3	STRATEGIC PLAN
4	BOARD OF DIRECTORS
5	AWARD-WINNING CARE
6	COMMUNITY BENEFIT BY THE NUMBERS
7	OPERATIONAL EXCELLENCE
8	STRATEGIC GROWTH AND SMART PARTNERSHIPS
9	BALANCE SHEET
10-11	QUALITY & COMPASSION
12	EMPLOYEE ENGAGEMENT
13	COMMUNITY OUTREACH
14-19	RRH FOUNDATION



TO OUR COMMUNITY,

Ridgecrest Regional Hospital went from a profitable operation in 2019 to operating at a \$15 million loss in 2022, with little hope for fiscal relief or remediation in 2023. Like other independent rural healthcare facilities facing catastrophic financial threats, RRH is evaluating bleak options to continue serving our high desert population.

This financial strain is the result of a deficit from earthquake recovery investments in 2019, numerous unfunded COVID expenditures, higher staffing costs resulting from state and national shortages of medical providers and professionals, outmoded and outdated reimbursement models that have not kept up with the rising costs of labor and other operational costs, and an ongoing lack of relief and support due to geographic isolation. These barriers continue to threaten access to critical healthcare and wellness services in our community.

If “the vulnerable will suffer the most” in a financial crisis, we remind our stakeholders and elected leaders that in the vast, complicated network of healthcare systems, RRH’s proximity to natural disasters, geographic remoteness, and absence of proximity relief put us in the “most vulnerable” category.

There are some glimmers of hope on the horizon. In 2022, RRH leadership began to implement changes that reduced our losses while minimizing the erosion of our most critical services. We also began discussions with our elected officials to help adjust revenues and funding models to adequately reimburse services, which will protect remote hospitals like ours.

In the meantime, our entire staff continues to work hard every day to protect the health and wellness of you and your family. We are exploring and implementing complex solutions that will ensure our ability to sustain services long into the future while still meeting the critical needs of the present. Our intense efforts to train and recruit employees are beginning to bear fruit, and we have begun to welcome new and returning practitioners to our valley.

We know that our challenges are not over yet, but we are committed to this path toward recovery.

James A. Suver, FACHE, President/Chief Executive Officer

RIDGECREST REGIONAL HOSPITAL STRATEGIC PLAN

OUR PURPOSE

To care for our community's health and the well-being of those who care for them.

OUR VISION

To be the partner of choice for the healthcare needs of our community.

OUR VALUES

Excellence, Integrity, Diversity, Service, and Compassion.





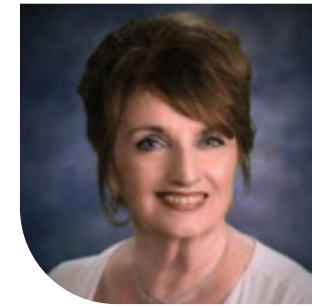
BUD HASLAM
Chair



DANA LYONS
Vice Chair



SHROOQ ABU-ISSA
Secretary



MARGIE HANNON
Treasurer

2022-2023 **BOARD OF DIRECTORS**



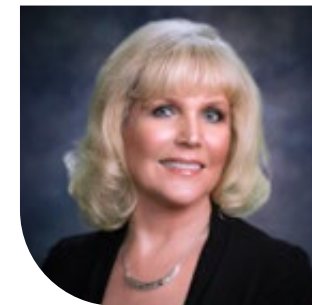
CHRIS ELLIS



MARGARET HOPPUS



WALTER MARTIN



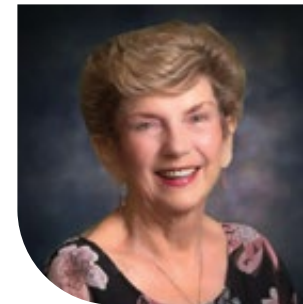
RITA READ



JIM RIZZARDINI



PAIGE SORBO-NETZER



JUDY THARP



AWARD-WINNING CARE

Ridgecrest Regional Hospital is the first critical access hospital in California to earn the prestigious ISO certification.



ISO CERTIFICATION

The International Organization for Standardization (ISO) certification is a rigorous process in which a hospital improves and monitors the delivery of patient care, measures quality and places the highest priority on eliminating process errors.



DNV ACCREDITATION

In July 2010, Ridgecrest Regional Hospital became one of the first hospitals in California to receive accreditation from Det Norske Veritas (DNV) Healthcare, Inc. As a result of receiving this accreditation, RRH may continue receiving funding from the Centers for Medicare and Medicaid Services.



CAP ACCREDITATION

In June 2011, Ridgecrest Regional Hospital received CAP (College of American Pathologists) accreditation. Designed to go well beyond regulatory compliance, the program helps laboratories achieve the highest standards of excellence to positively impact patient care.



BELLA SERA 5-STAR RATING*

Since October 1, 2022, Ridgecrest Regional Hospital's Bella Sera Skilled Nursing Facility has been awarded an honorary 5-star rating from the Centers for Medicare and Medicaid Services (CMS) for the high-quality care its staff provides to our residents. The 5-star rating is based on the skilled nursing facility's three most recent health inspections, staffing levels and quality measures. CMS created the rating system to help consumers, families and caregivers compare nursing homes.

*Rating received in 2022.



AMERICAN COLLEGE OF RADIOLOGY ACCREDITATION

Ridgecrest Regional Hospital has been awarded a three-year term of accreditation in Radiology as the result of a recent survey by the American College of Radiology.

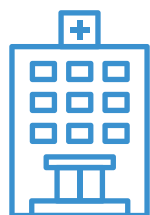
COMMUNITY BENEFIT

BY THE NUMBERS | 2022



1,589

ADMISSIONS



101,923

CLINIC VISITS



19,436

EMERGENCY DEPARTMENT VISITS



15,236

URGENT CARE VISITS



42,754

DIAGNOSTIC IMAGING
PROCEDURES

2,345

SURGICAL
PROCEDURES



349,594

LABORATORY TESTS



17,447

SKILLED NURSING DAYS



OPERATIONAL EXCELLENCE

RRH WELCOMED SEVERAL NEW PROVIDERS IN 2022, INCLUDING:

3

INTERNAL MEDICINE

2

GENERAL SURGEONS

1

ORTHOPEDIC SURGEON

12

RADIOLOGISTS

4

INTENSIVISTS

2

NEPHROLOGISTS

1

GI

5

NPs

2

OB/GYNs

1

PEDIATRICIAN

BELLA SERA SKILLED NURSING FACILITY

22

Certified Nursing Assistant Training Program graduates

15

of those stayed to work as CNAs

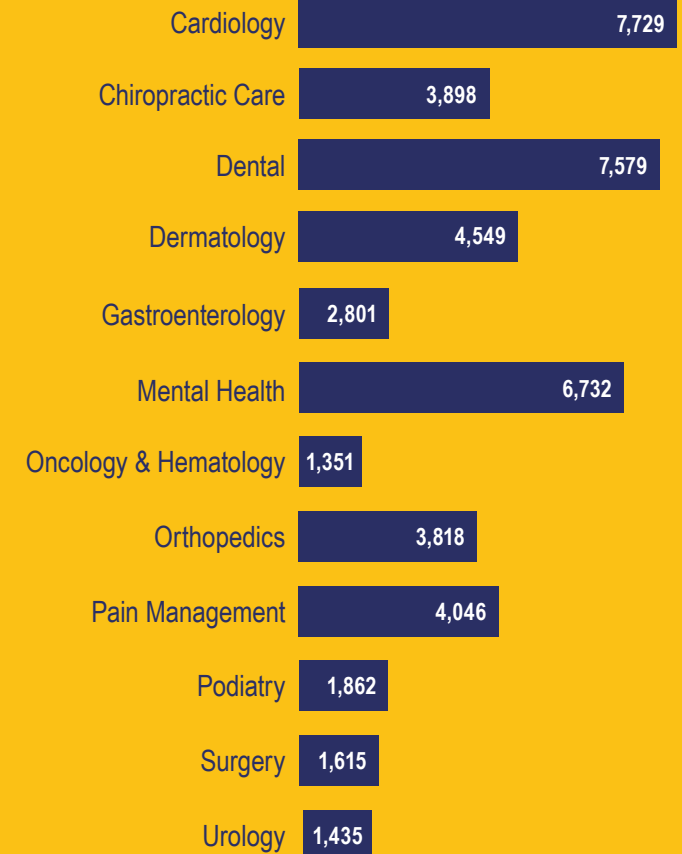


931
RRH EMPLOYEES

TOTAL GROSS EMPLOYEE WAGES,
INCLUDING BENEFITS:

\$69,267,156

SPECIALTY CLINICS, TOTAL VISITS



FINANCIAL STEWARDSHIP & STRATEGIC GROWTH



EMS GROWTH

Our Liberty Ambulance department and paramedics provide an advanced level of commitment to our community. Here's a snapshot of the department's reach in 2022:



77 EMPLOYEES	78,322 TOTAL POPULATION SERVED	9,393 RESPONSES
------------------------	------------------------------------------	---------------------------

260 CCT TRANSPORTS	6,824 TRANSPORTS	8,356 SQUARE MILES COVERED
------------------------------	----------------------------	--------------------------------------

\$2,437,550
UNCOMPENSATED CHARITY CARE

The CCT is not included in the number of transports.

SMART PARTNERSHIPS



We teamed up with USC Urology, a part of Keck Medicine of USC, one of the nation's leading urology programs, to bring you comprehensive urologic treatment conveniently close to home.

Urologic services include treatment for:

- Bladder Cancer
- Endourology
- Kidney Cancer
- Male Infertility
- Men's Health
- Prostate Cancer
- Pelvic Medicine and Reconstructive Surgery
- Testicular Cancer
- Urology Preventive Medicine

For information and appointments, please call 760-463-8930 or visit [RCH.ORG/UROLOGY](https://www.rch.org/urology).

Clinic address: East Medical Plaza, 2nd Floor, 105 E. Sydnor Ave., Ridgecrest, CA



in alliance with
Keck Medicine of USC
USC Urology



In 2021, RRH teamed up with inSite Digestive Health Care, and that partnership is still going strong. Founded in 2012, inSite Digestive Health Care (now Genesis Healthcare Partners, an affiliate of Unio Health Partners) is the largest gastroenterology physician group in California. With this partnership, we are able to meet all the gastroenterology needs of our community.

Gastroenterology services include treatment for:

- Constipation
- Stomach Pain
- GERD/Acid Reflux
- Gallstones
- Irritable Bowel Syndrome
- Crohn's Disease
- Ulcers

For more information and appointments, call 760-446-0121.

Clinic address: 1041 N. China Lake Blvd., Ridgecrest, CA



RIDGECREST REGIONAL HOSPITAL BALANCE SHEET

	2022	2021*
ASSETS		
Cash & Equivalents	\$3,448,657	\$13,134,821
Patient Accounts Receivable	\$19,402,207	\$21,733,249
Supplies	\$2,496,081	\$2,602,061
Property, Plant & Equipment	\$76,035,077	\$76,927,107
Other Assets	\$55,290,464	\$59,955,067
Total Assets	\$156,672,486	\$174,352,305
LIABILITIES & NET ASSETS		
Accounts Payable	\$7,589,137	\$7,058,321
Due to Third Parties	\$1,575,574	\$2,231,596
Long-Term Debt	\$47,636,957	\$49,399,286
Other Liabilities	\$17,618,854	\$16,151,533
Total Net Assets	\$82,251,964	\$99,511,569
Total Liabilities & Net Assets	\$156,672,486	\$174,352,305
STATEMENT OF OPERATIONS		
Revenues	\$141,240,371	\$151,138,732
Expenses	\$158,465,947	\$149,976,505
Net Income/(Loss)	\$(17,225,576)	\$1,162,227
UNCOMPENSATED CARE COSTS		
Net Uncompensated Care Including Charity Care	\$6,399,738	\$5,298,091

*Unaudited numbers

QUALITY & COMPASSION



30
Active volunteers



IN SUPPORT OF OUR COMMUNITY, RRH HAS GIVEN:

\$14,550
IN DONATIONS

\$14,643
IN SPONSORSHIPS



8

We found **EIGHT** patients with a high risk for lung cancer with the use of our low-dose CT scanning machine.



Having a service close to home is vital in ensuring the children born to those within our service area have the very best health outcomes. Emergencies related to pregnancy can happen very rapidly. If not managed quickly, outcomes can be catastrophic.

Below is a summary of some of the services that were provided to our childbearing families.

2022 Data:

Deliveries	428
Newborns	431 (3 sets of twins)
Newborn Transfers (due to higher level of care required)	7
Mother Transfers (due to higher level of care required)	8
Prenatal Testing (NSTs)	605
Required Additional Testing at RRH Prenatally	257
Outpatient Visit for Possible Labor but Discharged	898
Total OB Outpatient Procedures	1,027
Prenatal Classes for Families	7 7-week sessions
Lactation Consults (inpatient)	104 (6 months, data)
Lactation Consults (outpatient)	67 (6 months, data)
Phone/Email Consults	358

Although we provide care for low-risk pediatrics, we did have:

Pediatric Admissions	51
Pediatric Outpatient Procedures	102
Newborn Follow-Up Weight Checks	30
Follow-Up Bilirubin Exams for Newborns	24
Follow-Up Newborn Hearing Screens	48

431
BIRTHS
IN 2022



Staff Credentials

28
REGISTERED
NURSES

8
ADVANCED
CERTIFICATIONS

4
LVNs

2
OB TECHS

1
CLERICAL SUPPORT

EMPLOYEE ENGAGEMENT



EMPLOYEE EDUCATION & TRAVEL

RRH invested **\$487,789** in scholarship money used for employee education and travel purposes.

FOOD BASKET DONATIONS TO RRH EMPLOYEE FAMILIES

RRH employees put together Holiday Food Baskets for their coworkers who were in need of a little extra help. **80 baskets** were handed out to RRH employees and their families in 2022.

HOSPITAL WEEK

During Hospital Week (May 8-14) the Employee Engagement Committee brought some wellness and fun activities to employees to celebrate. Activities included a step challenge, a scavenger hunt, visits from therapy dogs, lunch and shaved ice and various spirit days. The theme, "We are Health Care," was a perfect reminder that it takes all employees to provide exceptional care, and at RRH we are stronger together.



STAYING ACTIVE

Throughout the year, RRH employees participated in a total of three step challenges. The step challenges encouraged employees to move more by averaging **9,000** steps a day. Around **250** employees participated throughout the year with approximately **9,639,027** total steps taken.

EARTH DAY, HAPPINESS HAPPENS, HONORING OUR VETERANS AND MORE

Other Employee Engagement activities focused on whole-person well-being, while still providing fun opportunities to connect. The Earth Day planting day was a huge success! Representatives from the Ridgecrest Community Garden were on hand to share tips about how to garden in the desert. Employees could choose their seed of choice to plant: lavender, basil, cilantro, mint, wildflowers and more were available.



Happiness Happens Day was celebrated on August 8 with smiley-face cookies. Employees were encouraged to share their favorite inspirational quote for the next employee to pick up and take with them.

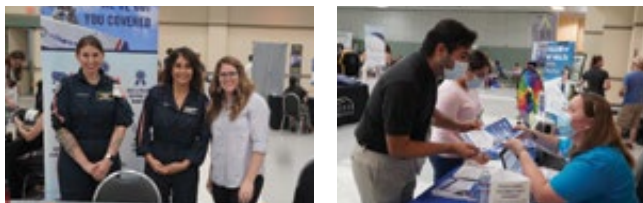


This year, we also honored our employee veterans. A social media campaign highlighted their years of service in the military. We thank all veterans for serving our amazing country!

COMMUNITY OUTREACH

Health Fair

The 2022 Health Fair was a welcome return to an in-person program. The event consisted of three provider talks, over 30 health and wellness vendors and a kids' corner complete with obstacle courses and learning games.



Water District Wellness Day

RRH brought the Health Fair to the IWV Water District. In total, 23 blood chemistry panel screenings, 16 PSA tests and seven CA-125 tests were completed. Blood pressure checks, flu shots, massages, stretching, a mindfulness session and provider consults were available to the employees.



Diabetes Empowerment Education Program (DEEP™)

RRH offered three DEEP™ workshops throughout the year with over 25 participants. DEEP™ is an evidence-based diabetes self-management education program for people with prediabetes or diabetes. The workshops consist of six classes that provide a supportive environment where participants work together to learn about health management tools and lifestyle choices.

Diabetes Grocery Store Tours

Along with each DEEP™ workshop, a diabetes grocery store tour was also offered. The tours provided education and tips on how to be a smart shopper and what to look for in products to better help manage diabetes.



Relay for Life

The RRH Curesaders participated once again in the Relay for Life event in 2022. They held a luminaria fundraiser and provided

education on skin cancer prevention, breast and testicular cancer awareness and vaping and smoking awareness. The RRH teams donated more than \$5,000 to Relay for Life.

Fitness Opportunities for Seniors

RRH offers 16 exercise classes each week for free to seniors 60 years and older. Classes average 18 participants and provide an environment of support, connection and friendship.

Mental Health Benefits of Gardening

RRH partnered with the Ridgecrest Community Garden to offer a workshop focused on how nature, gardening and **mindfulness** can help reduce the stresses of life.



Salvation Army Holidays

RRH employees volunteered with the local Salvation Army to help prepare meals for Thanksgiving and Christmas and to be bell ringers for the Red Kettle campaign.



PROVIDING COMMUNITY SUPPORT

PARENT & FAMILY EDUCATION

- Childbirth classes
- Stop the Bleed



166 gift bags donated by the Ridgecrest Realtors Association

SENIOR SERVICES

Homemaker Services provided service to

671
INDIVIDUALS

103
grocery trips
FOR SENIORS

Case Management provided services to

96
INDIVIDUALS

INFORMATION & ASSISTANCE PROVIDED TO
1,452 INDIVIDUALS,
either through phone calls, walk-ins or community outreach events

OUTREACH PROGRAMS

- SilverSneakers
- Journey to Happiness Seniors Group
- Gentle Chair Yoga
- Diabetes Support Group
- CHF Support Group
- Grief Support Group
- Alzheimer's Support Group



RIDGECREST REGIONAL HOSPITAL FOUNDATION

\$1,313,329
TOTAL RAISED TO DATE

\$171,886
TOTAL RAISED IN 2022



OUR MISSION

To engage the community in a partnership to facilitate excellent care and to secure resources to support sustainability and growth of the hospital.

A LETTER FROM THE EXECUTIVE DIRECTOR



With 2022 behind us, and looking back over the past several years, it is very evident to me what a great community we live in. With this past year being our first “normal” year of late, our community came out in force to support the Foundation.

Whether it’s attending the Butterfly Release in May, participating in our Christmas Tree Village or simply making donations to support our campaigns, it fills me with pride knowing I live in a place where the culture of giving is so abundant. This gives me great hope for the future.

Reflecting on 2022, there are so many noteworthy accomplishments. First, we awarded our first Fred Hawkins Memorial EMT Scholarship in the fall. This scholarship will be awarded semi-annually to support students planning on careers in the medical field. Our first recipient, Jessica Lowry, has completed the EMT course and is now waiting to take her national exams.

With the huge success of our Butterfly Boutique, we are able to assist in the support and care of local hospice patients as we await the opening of our hospice house. This small but mighty shop is run solely by volunteers; in 2022 they raised over \$70,000 for RRH Hospice and Home Health.

The 2022 Christmas Tree Village is another success story. This year, it boasted over 35 beautifully decorated trees donated by local businesses, individuals, organizations and the RRH family. Over \$19,000 was raised for our Emergency Room Campaign, and many happy community members viewed the beautiful trees and enjoyed the hot cocoa bar. The Christmas Tree Village is made possible through the support of the approximately 30 members of Women in Philanthropy. This organization is a huge supporter of the Foundation, both financially and through volunteer hours.

Despite the major obstacles the past few years have placed in our path, we have continued to grow and prosper because of you, our donors and those who believe in us. Thank you all for being a part of the phenomenal success of the Foundation. I look forward to seeing what great things we will do in 2023.

With sincere gratitude,

A handwritten signature in cursive script that reads "Kim Metcalf". The ink is dark and the signature is fluid and legible.

Kim Metcalf, **Executive Director**

“All our dreams can come true, if we have the courage to pursue them.” – Walt Disney

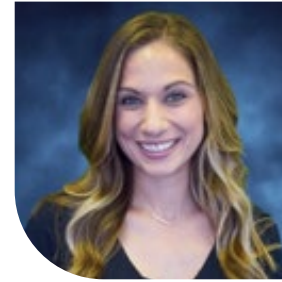
RIDGECREST REGIONAL HOSPITAL FOUNDATION
BOARD MEMBERS 2022-2023



Todd McKinney
Chair



Leslie O'Neill
Vice Chair



Sarah Dosen
Treasurer



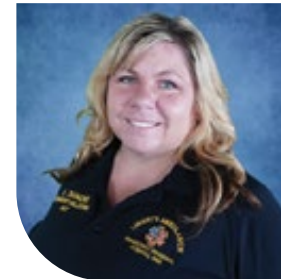
Sherry Brubaker
Secretary



Gayle Pietrangelo
Board Member



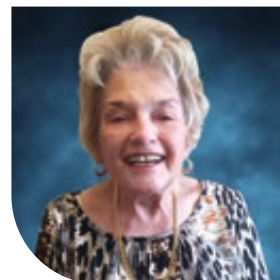
Tammy Kinnan
Board Member



Amanda Diamond
Board Member



Rita Read
Board Member



Joanne Stauffer
Board Member



Beverly Wagner
Board Member



Bud Haslam
RRH Board Liaison



12th Annual Butterfly Release

In 2022, the Foundation was happy to be able to celebrate and honor our loved ones in person once again. In fact, 2022 boasted the largest turnout yet for this beautiful and loved event, with over 100 people in attendance.



Women in Philanthropy

Boasting over 30 members, this amazing group of women not only serve as ambassadors for the Foundation, they are worker bees. These women meet once a month to plan future events (Women's Tea and Health Expo, Christmas Tree Village, etc.) and to socialize. Not only do they donate financially, they donate their precious time to make sure that all Foundation events run smoothly.



2022 Christmas Tree Village

With the generosity of local businesses, community organizations, donors and our RRH Family, we were able to bring the "Village" back with gusto, showcasing 35 unique and beautifully decorated trees. The event garnered just over \$19,000 in donations for our Emergency Department Campaign. The "favorite" RRH Tree was donated by Liberty Ambulance Services, while the "favorite" Community Tree was donated by Avis Rent-A-Car. More than 200 community members stopped by to look at the trees, place their bids and, of course, enjoy a hot cocoa bar donated by the Foundation.



First EMT Scholarship Recipient

The Foundation was very proud to present its first-ever Fred Hawkins Memorial EMT Scholarship to Jessica Lowry. Jessica completed the EMT course in December and is waiting to take her National Registry exams. Congratulations to Jessica on such a wonderful accomplishment. The Foundation offers two scholarship each year, one for the fall semester and one for the spring semester.



\$304,880 SINCE OPENING

November 2022 was the most profitable month since opening, with a net of **\$8,870.95**. Run solely by volunteers, the boutique runs smoothly and is warm and welcoming, thanks to a small but mighty group of women.



THANK YOU TO OUR COMMUNITY PARTNERS

The Swap Sheet
WACOM
NDTI
ARCATA
PACT
Grainger
INQU
AltaOne FCU
Union Bank
Ridgecrest United Methodist Church
Studio 760
Ledesma Chiropractic
The Flight Line
Rebecca O'Donnell – Realtor
Xi Omicron Mu BSP
Exchange Club of Ridgecrest
Dosen Realty
Avis Rent-A-Car
Romancing the West
The Flower Shoppe
CERT
Teresa's Auto Body
Alex Fischer – Guaranteed Rate
Protestant Women of the Cross
Kiss and Bell Wedding and Events
Griffin Wines
Amber Glow Ranch
High Desert Therapy Dogs
The Butterfly Boutique
The Daily Independent

2022 DONOR RECOGNITION

PARTNERS (\$5,000.00 AND UP TO \$250,000.00)

Estate of Ruth Cooper
Lloyd and Beatrice Smith
Judith and Bobby A. Tharp
Hope Zissos, MD

PLATINUM (\$1,000.00 TO \$4,999.99)

Sandy Aubin
Janelle Bloudek
Sandra Brown
Deborah Buffum
Henry Canle
Lawrence Cosner, MD
Healthy Desai, MD
Jim Fantaski
Joseph Furtado
George Haslam
IWVPCSG
Tamara Khalifeh
Tammy Kinnan
Rosemary Lynn
Ronald Marvin
Kimberly Metcalf
Michael Metcalf
Celia Mills
Patricia Mullis
Jerry and Michael Mumford
Naomi Norris
Leslie O'Neill
Optima
Melissa Price
Jennifer Pritchard
Susan Reynolds, MD

Karen Rivers
Esther Sires
Joanna Stauffer
Paul Stemmer, MD, and
Veronica Stemmer
Carole Tobias
Daphne Unhassobiscay
WACOM
John Watkins
Patricia A. Wharton

GOLD (\$500.00 TO \$999.99)

Troy Baena
Cynthia Bielins
Lora Blowers
Susan Bodnar
Jeff Dibble
Lori Fischbach
Lucy Griffith
Jennifer Johnston
Sandi Krul
John LaFontaine
Michelle Lemke
Todd McKinney
Polly Metcalf
Donna Mullis
NDTI
Rebecca O'Donnell
Suann Pietrangelo
Protestant Women of the Cross
Debra Rogers
Shainna Spratt
Shantell Utley
Francina Van der Hoek

Michelle Whalley
Joseline Wong

SILVER (\$250.00 TO \$499.99)

Arcata
Andres Arredondo
Genera Arreola
Miriam Barashari
Jenifer Boisvert
Sean Bradley
Margaret Breeden
Christine Cline
Erin Cocciolone
Diana Guerra, MD
Ash Hill
INQU
Nicolle Kielman
Marilyn Kincaid
Eric Larbe
Matt Lilly
Fred Mansfield
Eric Marshall
Jalene Martin
Lori McGee
Laura Metcalf
Michaela Metcalf
Jason Milner
Tera Moorehead
Thomas O'Neil
Sherel Ott
Sean Patrick
Steven Price
Carole Robertson
Margaret Rose

James Saaty
Zachary Sandoval
James A. Suver
Lori Tiffany
Beverly Wagner
Josefina Weeks
Robert Woods

COPPER (UP TO \$249.99)

Charla Abbott
Shrooq Abuissa
Amy Allen
Jessica Allen
Julie Andersen
Anonymous (3)
Audri Arndt
Ezra Arreola
Ann Auld
Claire Barker
Kandy Baxter
Helene Belden
Kelly Benadom
Lars Bergstsson
Beta Phi
Kyle Biles
Amanda Booth
John Bormann
Linda and Tom Bozack
Peter and Wendy Brennan
Jean Brown
Sherilyn Brubaker
Marian Bruce
Sue Bue
William Burns

Karen Byrd
Jesus and Dora Cavazos
Ricca Charlon
Camille Colpitts
Teanna Cooper
Jamie (Anne) Corbin
Leroy Corlett
Joseph Cramer
Jennie Davis
Elizabeth Diaz
Sandra Dominguez
Wayne Pat Doucette
Nancy Dragovich
Carey Drake
Christina Eiselin
Fred and Janelle Etoch
Mary Fair
Oscar Felsen
Monte and Tina Frisbee
Morgan Fuller
Vikki Furnish
Adrienne Gallagher
Michael Gallagher
Benny Garcia
Vera Gebro
Wendie Gelardi
Gifts That Give Hope
Kathleen Ging
Lisa Glantz
Jayde Glenn
Emily Gockley
Corrine Godschalk
Mayte Gonzalez
Billie Guerra, MD

Daisy Gutierrez
Minerva Gutierrez
Maria Gutierrez Flores
Karen Haden
Marie Haggard
Laura Hewlett
Maria Holm
Rose Marie Holtrop
Christopher Huddleston
Whitney Humphrey
Divina Irons
Christina Johnson
Cindy Johnson
Ziad Jureidini
Donna Keller
Emily King
Beverly Kolinsky
Karen LaFontaine
Larry Lane
Brian Lanterman
Tara Larkin
Edward Larosche
Dakota Leer
Amanda Lockie
Lorelle Luckey
Loretta Mace
Heather Martin
Wes and Joan Mathewson
Kathrin McDonald
Melody Meadows
Jennifer Melchor
Janet Mulvhill
Diane Naslund
Deborah Null

Lorie Ochoa
Helene Okx
Donna Oshel
Jill Owens
Dongen P.
Packer
Felicia Padgett
Melissa Parkinson
Jenifer Pelayo
Cristina Perige
Perine
Breanne Phillips Baez
Rob Pruett
Kari Quail
Crystal Quinn
Marieta Reddemann
Carolyn Reed
Claudia Reichers
Ridgecrest United
Methodist Church
Cherish Rindt
Marhea Roberts
Jimmi Rolof
Breanna Rosoff
Jessi Saaty
Karen Saaty
Austin Sandoval
Karyn Scoggins
Jennifer Scott
Stacie Shaw
Alessa Siler
Cheryl Sutton
Bobbie Swafford
Lois Taylor

Chalise Thornton
Nancy Thornton
Donna Tolkmitt
Art Ulat
Stephenie Valerius
Maria Vasquez
Rosemarie D. Vorwerk
Susan Walker
Amanda Wdowiak
Donna Weeks
Denise Welvang
Brad and Misty West Bruna
Elenor Winnemore
Leticia Zubia



RIDGECREST REGIONAL HOSPITAL
1081 N. CHINA LAKE BLVD.
RIDGECREST, CA 93555

RRH.ORG

STAY CONNECTED

FOLLOW US ON:    [RRIDGECREST REGIONAL HOSPITAL](https://www.facebook.com/RRH)

